

TÊTE

CHARCUTERIE

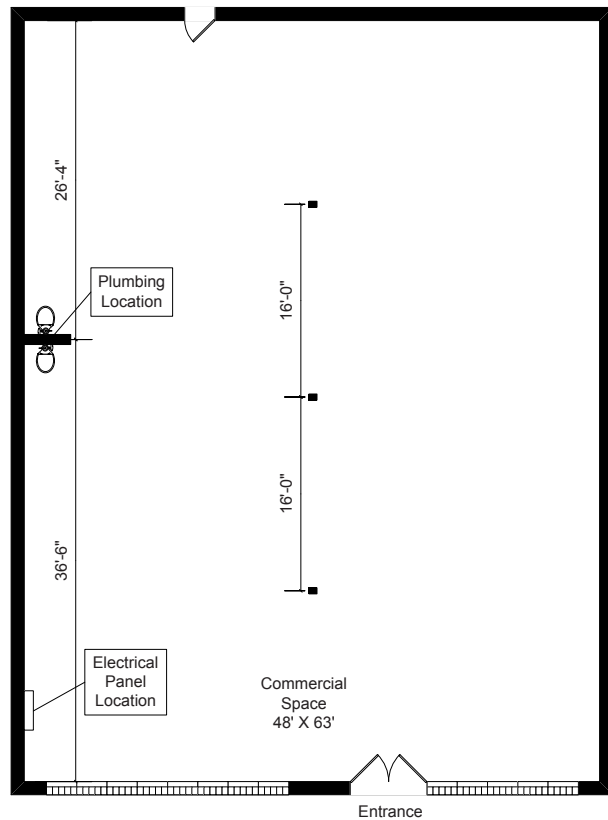
EST. 2011

1114 W RANDOLPH ST.
CHICAGO, IL 60607



5215 N RAVENSWOOD
CHICAGO, IL 60640
JOHNKELLYARCHITECTS.COM

FINAL DESIGN DEVELOPMENT



FIRST FLOOR PLAN
APPROX. 3,000 SQ. FT.



1114 W RANDOLPH ST.
CHICAGO, IL 60607



EXISTING SPACE

1114 W RANDOLPH ST.
CHICAGO, IL 60607



CHARCUTERIE

Tête's design finds balance between light and airy contemporary style while subtly capturing an origin of the French delicatessen through the use of earth tones and rustic materials. A Charcuterie bar will be a focal point of the restaurant which will serve to showcase the preparation of terrines, pates and other prepared meat dishes.



INDUSTRIAL MEATPACKING

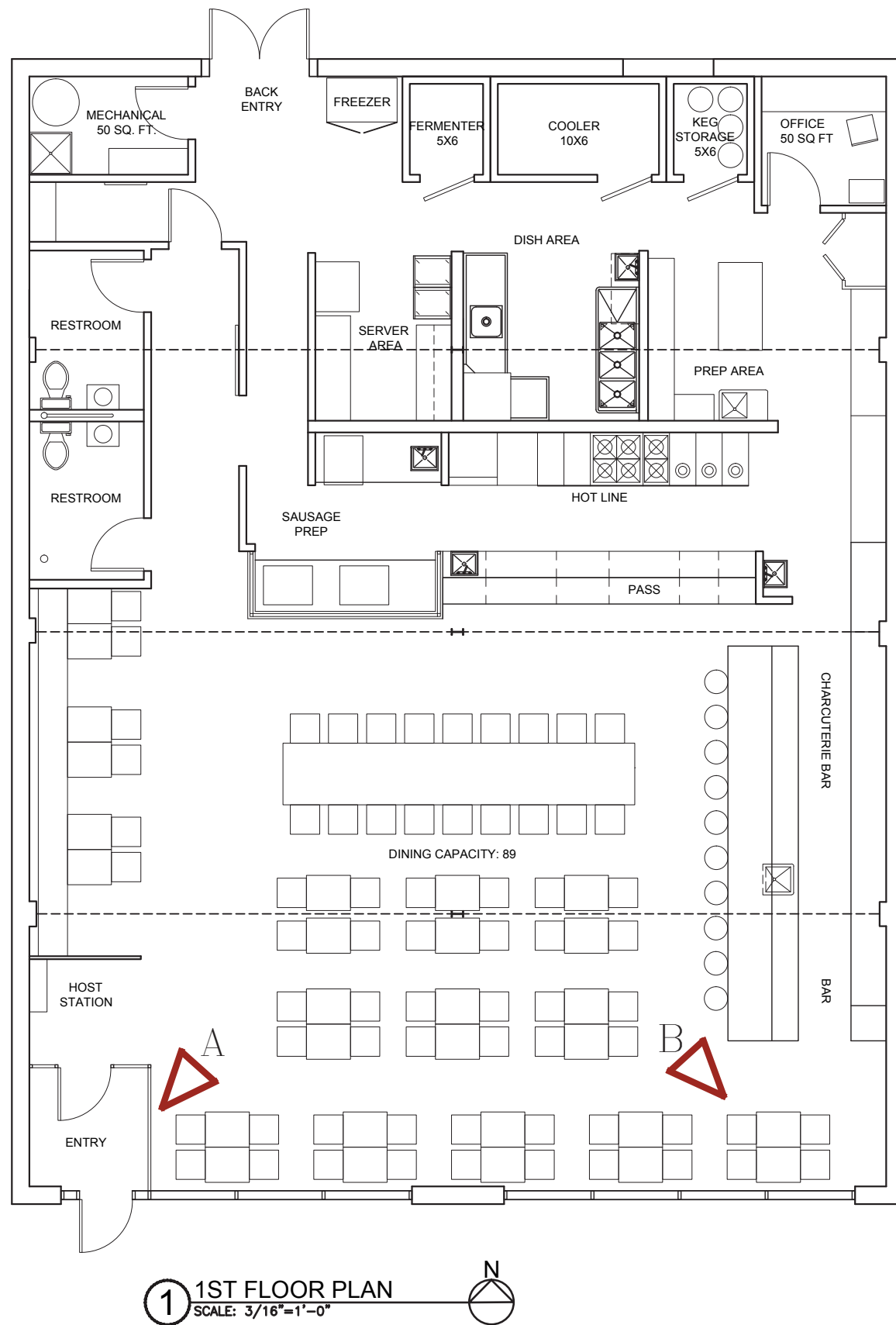
The design of this space will also integrate the raw materials of this meatpacking district building that was previously used for cold storage space. The preexisting steel structure adds to the industrial aesthetic of the design as well.

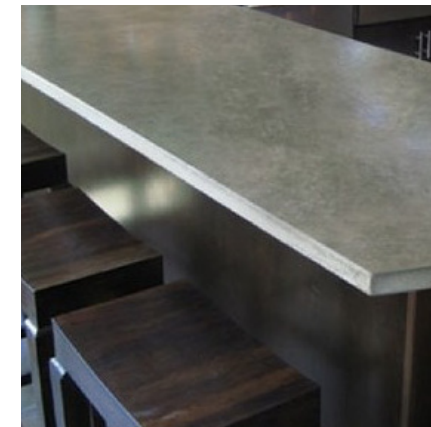


MODERN INTERPRETATION

With the rustic and industrial background of the existing space, a modern design aesthetic will be juxtaposed against it. The use of more finished materials will polish off the raw space and create a comfortable environment for Tête's guests.

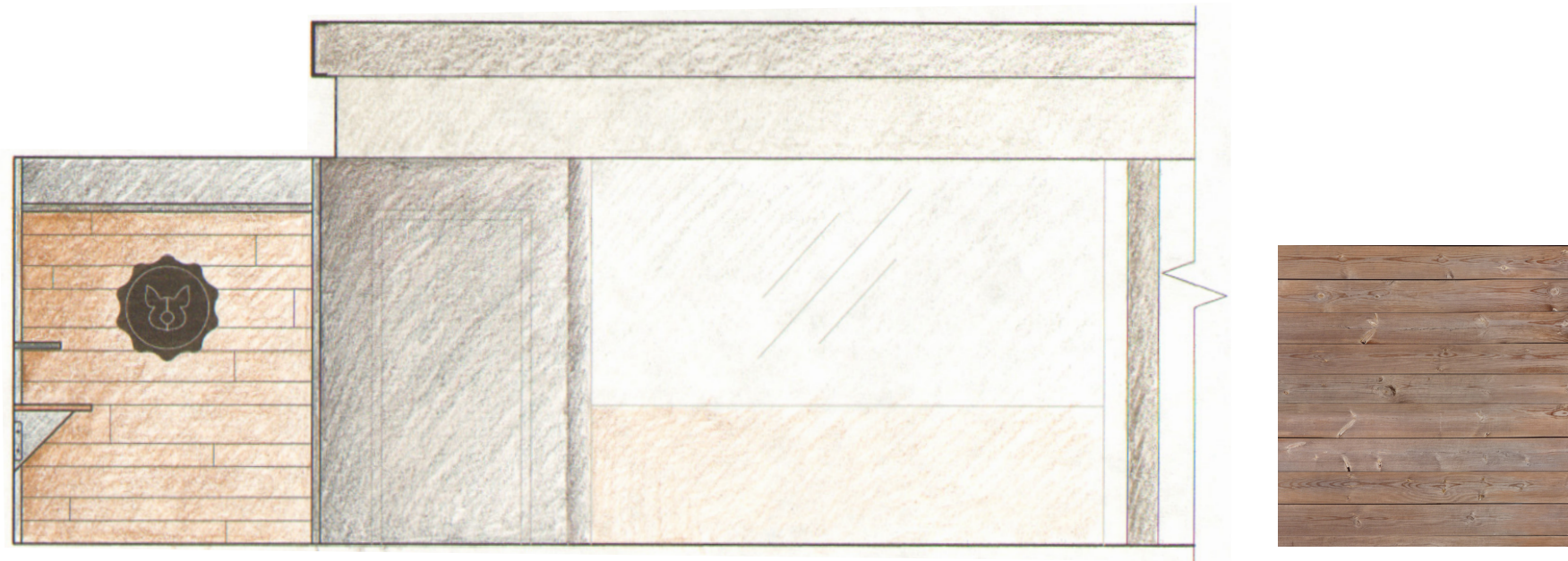




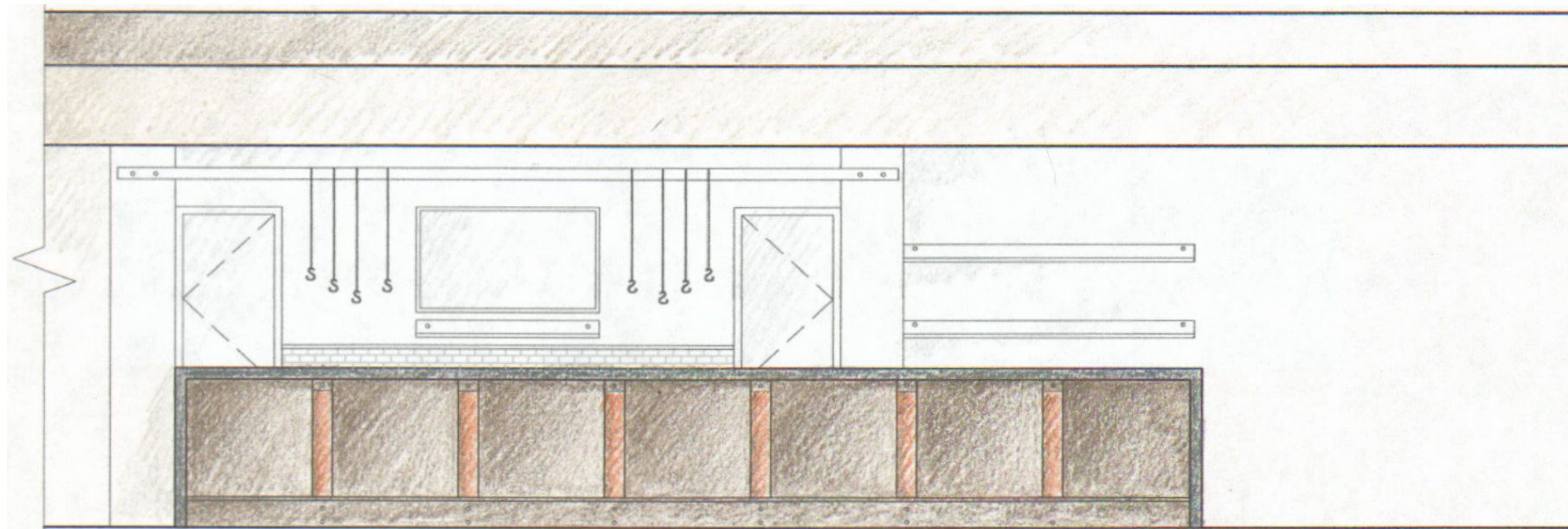






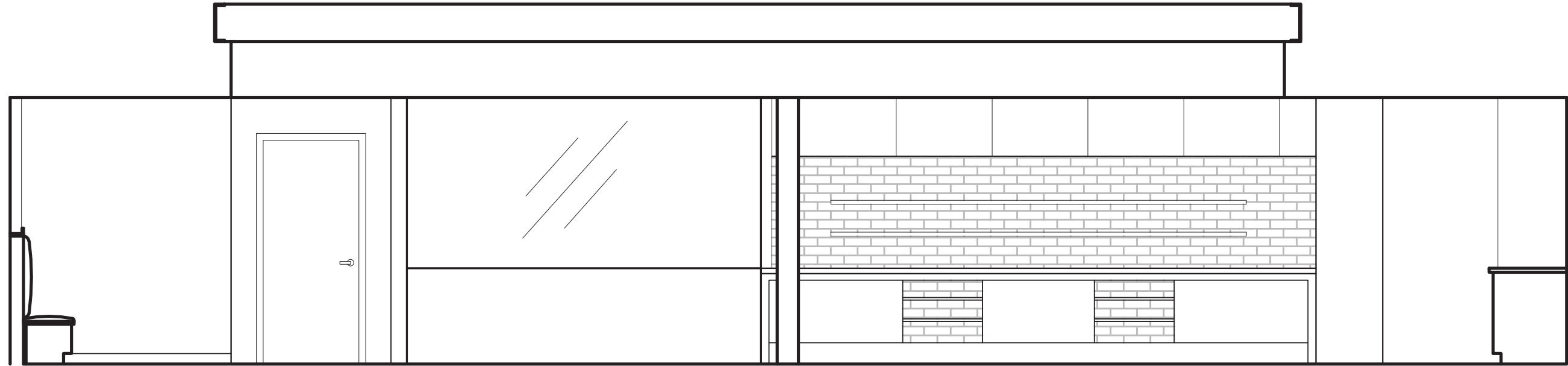


ENTRY ELEVATION 1&3



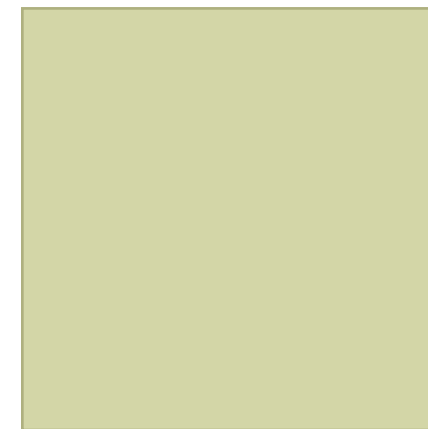
CHARCUTERIE BAR/BAR ELEVATION 1

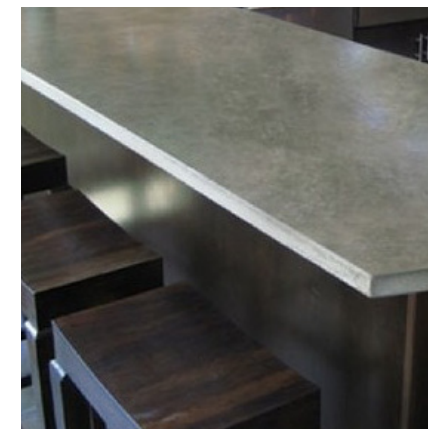




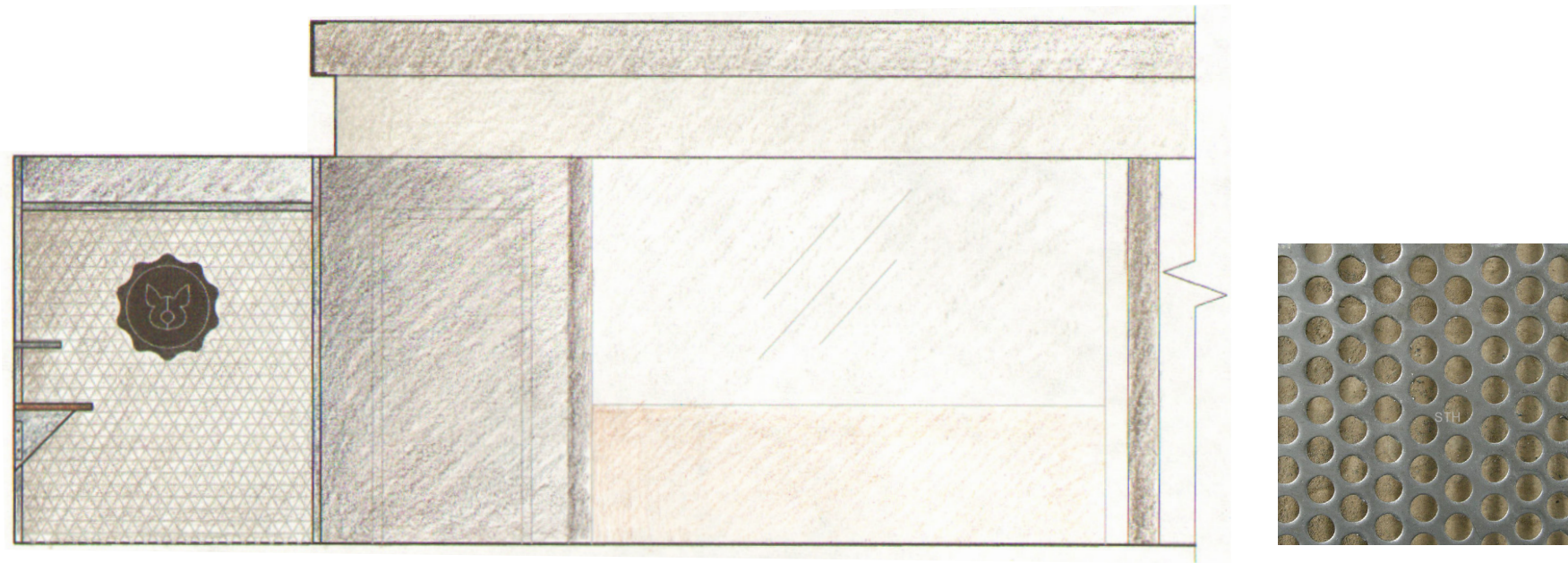
SAUSAGE PREP/PASS ELEVATION 1



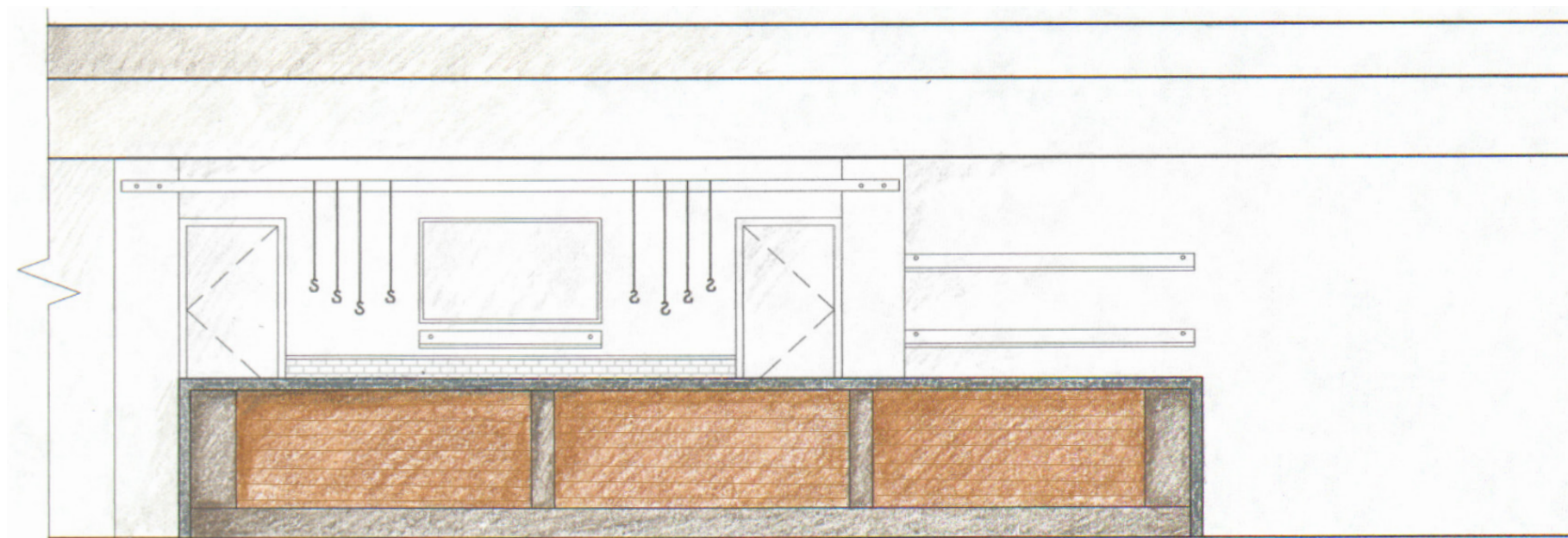






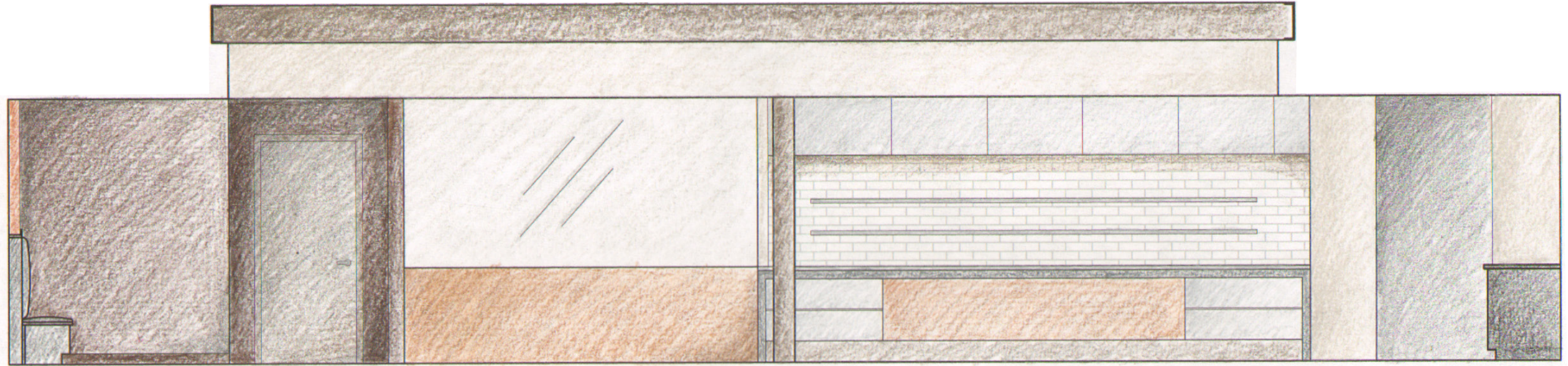


ENTRY ELEVATION 2



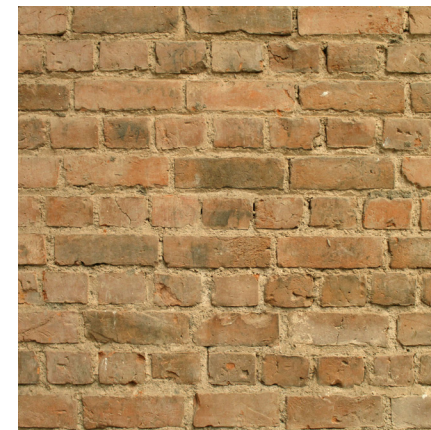
CHARCUTERIE BAR/BAR ELEVATION 2





SAUSAGE PREP/PASS ELEVATION 2



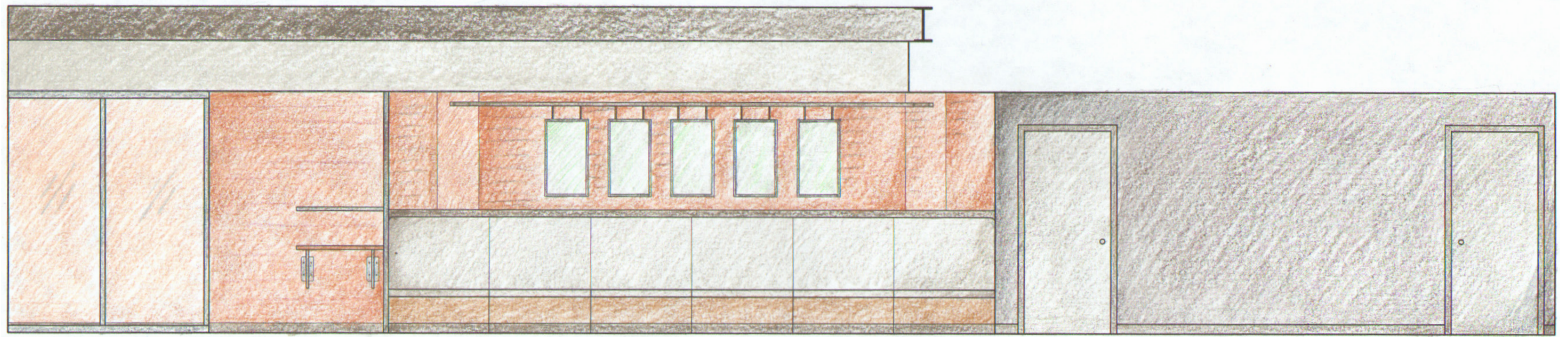


TÊTE
CHARCUTERIE
EST. 2011

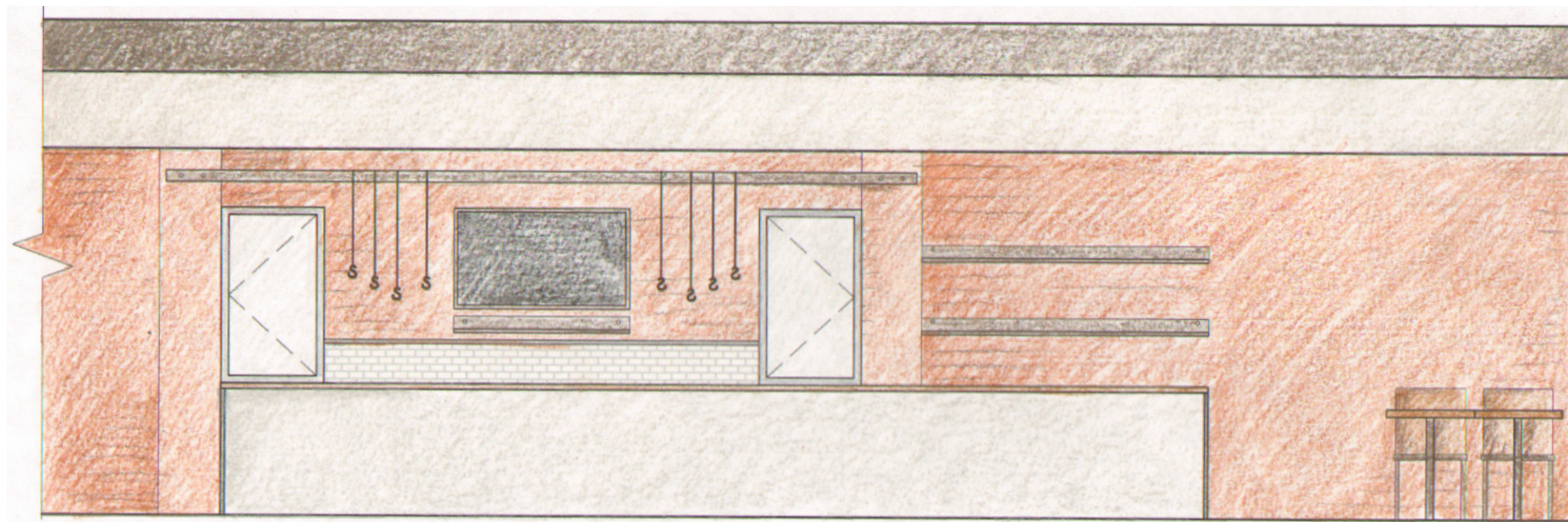
JKA
JOHN KELLY
ARCHITECTS
525 N RAVENSWOOD
CHICAGO, IL 60640
JOHNKELLYARCHITECTS.COM





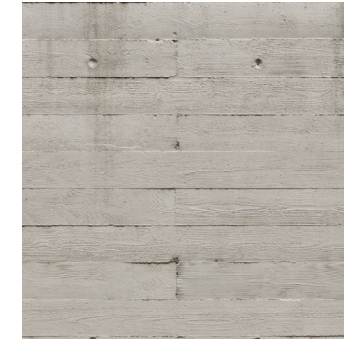
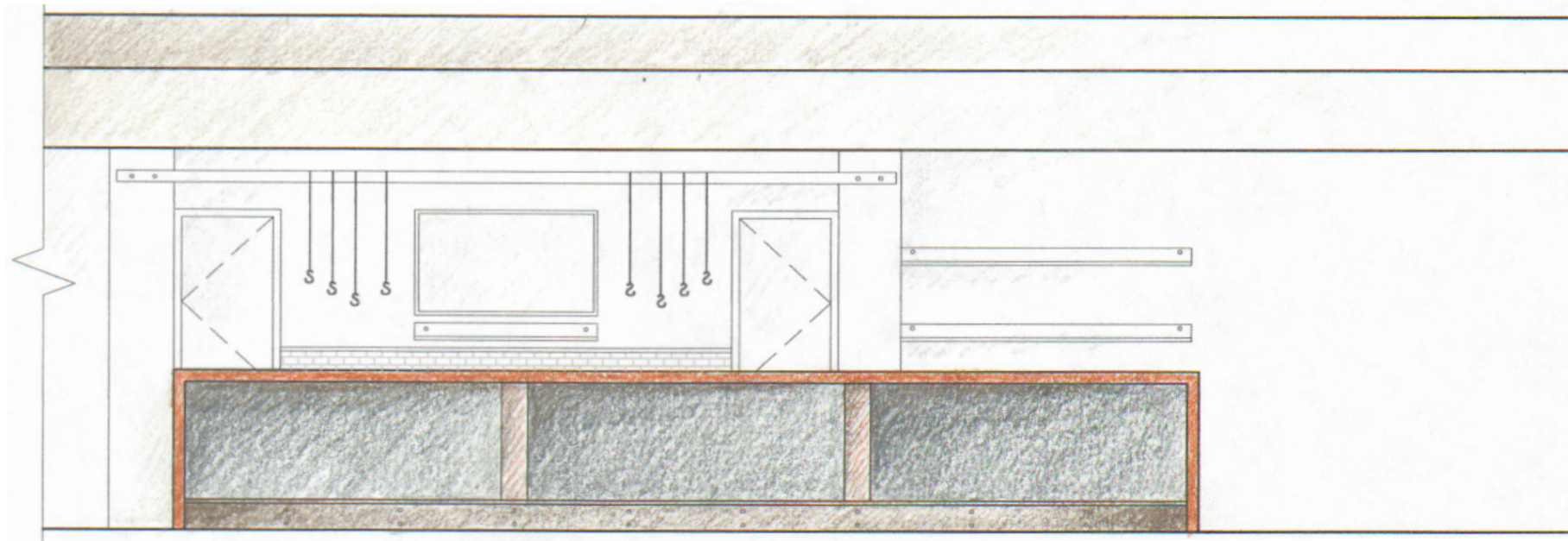


BANQUETTE ELEVATION

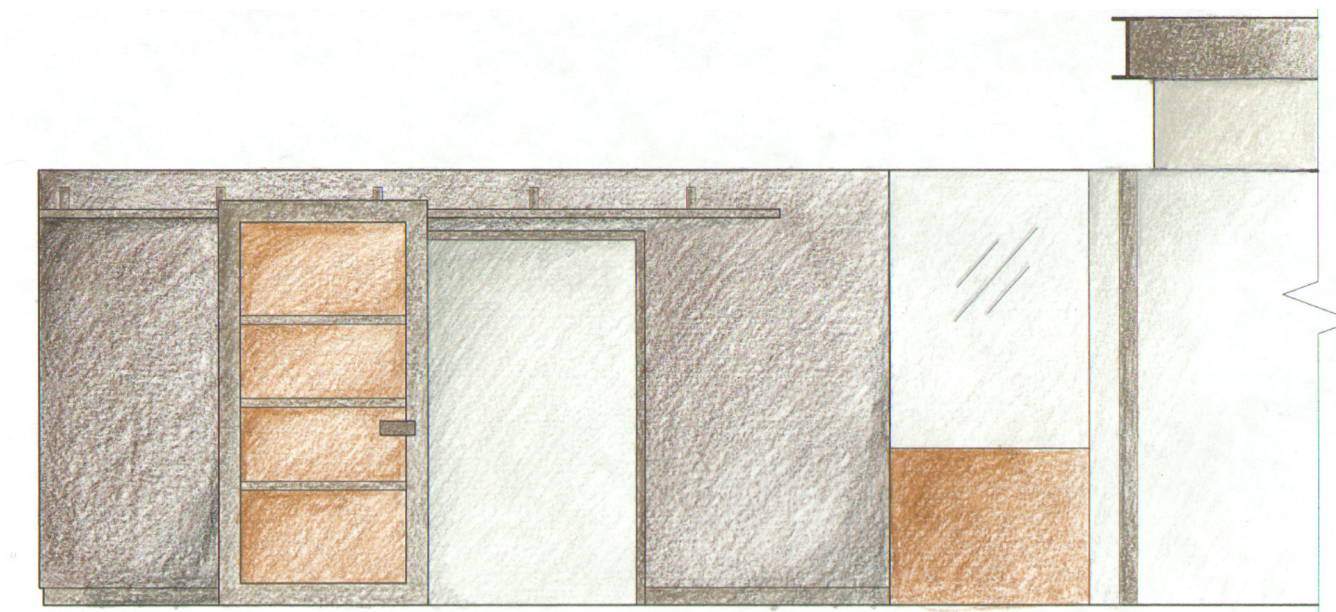


BACK BAR ELEVATION



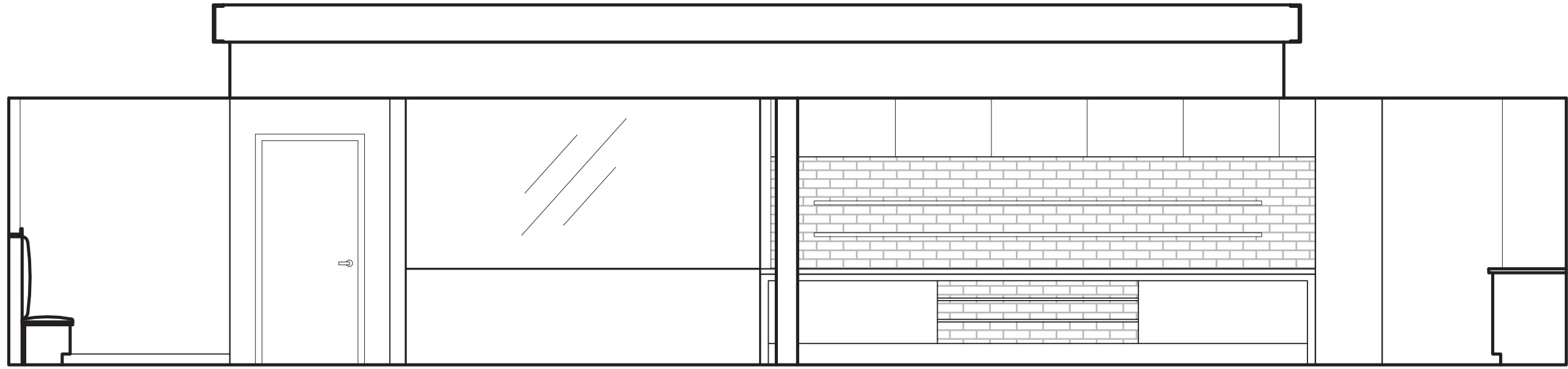


CHARCUTERIE BAR/BAR ELEVATION 3



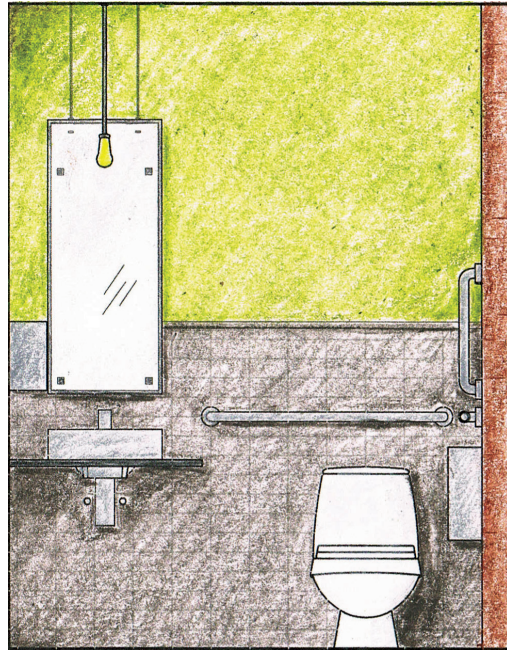
KITCHEN ENTRY ELEVATION



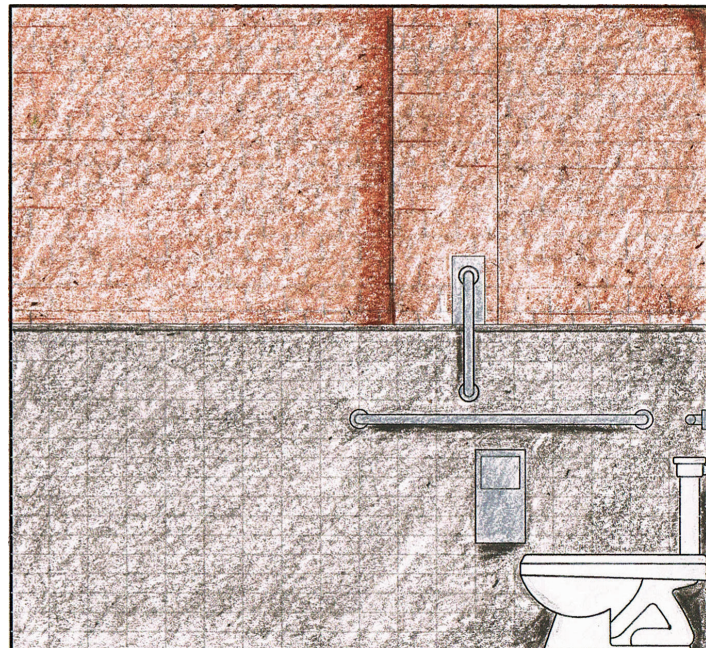
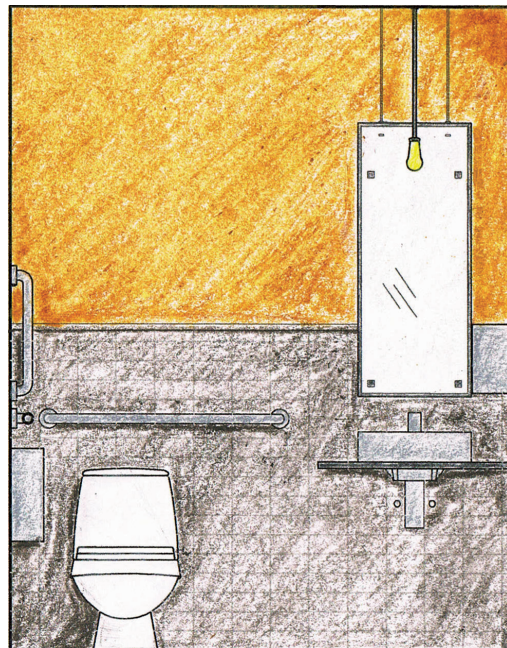


SAUSAGE PREP/PASS ELEVATION 3





MENS RESTROOM ELEVATIONS



WOMENS RESTROOM ELEVATIONS

