

#3 ROOM NAME: BEDROOM 207

A PRODUCT NAME: WESTMONT 6"
MANUFACTURER: SCHOOLHOUSE ELECTRIC

Product Detail

SKU: 251.0012.6

Includes Shades : no

Shades that Fit: 6

Canopy Width: 6.5"

Fitter Size: 6

Product Origin: USA

Max Wattage: 150

UL Listed: Yes

Fixture: L 5" x W 6.5"

FIXTURE: \$95 SHADE: \$70 TOTAL: \$165

FINISH: NATURAL
BRASS

SHADE: OPAL GLASS



SELECT FINISH



#3 ROOM NAME: BEDROOM 209

B PRODUCT NAME: WESTMONT 6"
MANUFACTURER: SCHOOLHOUSE ELECTRIC

Product Detail

SKU: 251.0012.6

Includes Shades : no

Shades that Fit: 6

Canopy Width: 6.5"

Fitter Size: 6

Product Origin: USA

Max Wattage: 150

UL Listed: Yes

Fixture: L 5" x W 6.5"

FIXTURE: \$95 SHADE: \$75 TOTAL: \$170

FINISH: BRUSHED
NICKEL

SHADE: OPAL GLASS



SELECT FINISH



#5 ROOM NAME: SIDE ENTRY

FINISH: BRONZE
W/ GLASS SHADE

A PRODUCT NAME: RUTHERFORD
MANUFACTURER: RESTORATION HARDWARE

Made of steel
Diffused light shines through the etched, cased glass; inner shade sheltered by clear glass
Uses two 60W max. bulbs
Damp UL-listed
Catalog and Web only

DIMENSIONS
13¾" diam., 7"H

TOTAL: \$219



B ROOM NAME: SIDE ENTRY
PRODUCT NAME: BRAXTON
MANUFACTURER: RESTORATION HARDWARE

FINISH: STEEL &
ETCHED GLASS

Made of steel
White-painted interior
Hardwire
Uses two 60W max. bulbs
Assembly required
Damp UL-listed
Catalog and Web only

DIMENSIONS
14" sq., 5½"H

TOTAL: \$219



#6 ROOM NAME: FAMILY ROOM 009

A PRODUCT NAME: GLASS CLOCHE FILAMENT
MANUFACTURER: RESTORATION HARDWARE

Cast-aluminum fittings

Finished in aged steel with antique brass plating or in polished nickel

Clear glass shade reveals the bulb and maximizes its light

Uses our 1910 Squirrel-Cage Filament bulb (a 40W max.

Type A bulb), included

Hardwire

Damp UL-listed

8' cord is covered in black cloth; cord may be shortened

DIMENSIONS

5½" diam., 6¾"H

TOTAL: \$119

FINISH: AGED STEEL
FITTING WITH BLACK
CHORD AND GLASS
SHADE



B ROOM NAME: FAMILY ROOM 009

PRODUCT NAME: McCOY
MANUFACTURER: REJUVENATION

Item # A4056

Canopy Size 4½"

Fitter Outside Diameter 2½"

Finish Graphite

Canopy color Black

Cord Twisted black cotton-covered (not UL)

Overall length 35"

Canopy Round Nose

Minimum length 14"

Select shade A4056+OP+B4972+

Maximum fixture wattage per socket 60"

Canopy width 4.656"

Overall fixture width 2.46"

TOTAL: \$142

FINISH: BLACK



C ROOM NAME: FAMILY ROOM 009

PRODUCT NAME: METAL FILAMENT 7½ PENDANT
MANUFACTURER: RESTORATION HARDWARE

Cast-aluminum fittings finished in polished nickel
Shade reveals the bulb and maximizes light
Uses our 1910 Squirrel-Cage Filament Bulb (a 40W max.
Type A bulb), included
Steel shade has an aged, era-appropriate finish to complement the bulb
16' cord is covered in black cloth; cord may be shortened

DIMENSIONS

16' cord
7½" diam., 6¾"H

TOTAL: \$119 (\$99 SPECIAL)

FINISH: POLISHED
NICKEL



#7 ROOM NAME: FAMILY ROOM 009

A PRODUCT NAME: DALTON
MANUFACTURER: RESTORATION HARDWARE

Stepped steel rim, smooth exposed hinges and knurled thumbscrew release

Fitted with opaque plated glass for even, warm light

Hand-polished, richly plated finishes

UL-listed for use in damp environments

Hardwire

10" and 13" flushmounts each use two 60W max. candelabra bulbs

17" flushmount uses four 60W max. candelabra bulbs

DIMENSIONS

10" Flushmount: 9½" sq., 4¾"H

TOTAL: \$239

FINISH: OIL RUBBED BRONZE



B ROOM NAME: FAMILY ROOM 009

PRODUCT NAME: HEATH
MANUFACTURER: RESTORATION HARDWARE

Built of solid steel

Hand polished and richly plated

4-bar construction holds the banded shade in place; the opalescent glass is frosted on the inside

Hardwire

UL-listed for use in damp environments

9" flushmount uses two 40W max. candelabra type B bulbs

13" flushmount uses two 60W max. candelabra type B bulbs

17" flushmount uses three 60W max. candelabra type B bulbs

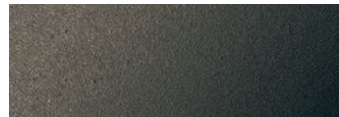
Catalog and Web only

DIMENSIONS

9" Flushmount: 9¼" diam., 4½"H

TOTAL: \$149

FINISH: OIL RUBBED BRONZE



B ROOM NAME: FAMILY ROOM 009

PRODUCT NAME: HARMON

MANUFACTURER: RESTORATION HARDWARE

Capped with a filter of frosted glass and exposed screws
Hardwire

9" and 13" flushmounts use one 60W max. bulb

17" flushmount uses two 60W max. bulbs

Catalog and Web only

DIMENSIONS

9" Flushmount: 9" diam., 3½"H

TOTAL: \$219

FINISH: OIL RUBBED
BRONZE



#8 ROOM NAME: BATHROOM 208

A PRODUCT NAME: IRVINE SINGLE
MANUFACTURER: SCHOOLHOUSE ELCTRIC

Product Detail

SKU: 254.0045.2

Fitter Size: 2.25

Canopy Width: 5"

UL Listed: Yes

Product Origin: USA

Fixture: 5.75" depth

Max Wattage: 100

Shades that Fit: 2.25"

TOTAL: \$149

FINISH: SATIN NICKEL

SHADE: VINTAGE
BLUE



B ROOM NAME: BATHROOM 208

PRODUCT NAME: COOS BAY
MANUFACTURER: REJUVENATION

Base Price 0"

Price as Shown 0"

no

Finish Brushed nickel

Socket Incandescent

Switch None

Select shade A9901++B9348+

Maximum fixture wattage per socket 60"

UL Listing UL Listed Damp

Canopy width 4.68"

Overall fixture width 4.68"

Calculated overall length 10.51"

TOTAL: \$147

FINISH: BRUSHED
NICKEL

SHADE: FROSTED BELL



#9 ROOM NAME: EXTERIOR

A PRODUCT NAME: DAKOTA EXTERIOR WALL
LANTERN
MANUFACTURER: LIGHTOLOGY

Dimensions: 13.25"H x 4.75"W x 5.75"D
Lamp Source: Incandescent
Bulb: 1 x A19/Medium/100W/120V
Bulb not included
Dimmer: Incandescent

TOTAL: \$107.99

FINISH: HERITAGE
BRONZE



B ROOM NAME: ENTRY VESTIBULE
PRODUCT NAME: CAMBRIDGE
MANUFACTURER: RESTORATION HARDWARE

Made of steel and brass
Wet UL-listed
Hangs vertically, shade pointing down
Small sconce uses one 60W max. candelabra bulb
Large sconce uses two 40W max. candelabra bulbs
Catalog and Web only

DIMENSIONS

Small Sconce: 7¼"W x 6½"D x 14½"H
Large Sconce: 10½"W x 11½"D x 18¾"H

TOTAL: \$279

FINISH: STEEL &
BRASS



#12 ROOM NAME: BATH 005

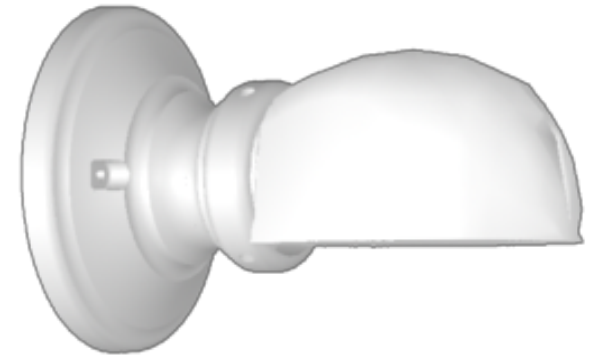
A PRODUCT NAME: HAINES
MANUFACTURER: REJUVENATION

Base Price	0"
Price as Shown	0"
	no
Finish	White porcelain
Socket	Incandescent
Select shade	A8260++B8893+
Maximum fixture wattage per socket	100"
UL Listing	UL Listed Damp
Canopy width	5½"
Overall fixture width	5½"
Calculated overall length	5.5"
Overall fixture depth	9¼"

TOTAL: \$113

FINISH: WHITE
PORCELAIN

SHADE: OPAL
GLASS



B ROOM NAME: BATH 005
PRODUCT NAME: SAGE
MANUFACTURER: SCHOOLHOUSE ELECTRIC

Product Detail

SKU: 254.0040.2	Product Origin: USA
Fitter Size: 2.25	Fixture: 5" depth
Canopy Width: 5.5"	Max Wattage: 100
UL Listed: Yes	Shades that Fit: 2.25"

TOTAL: \$161

FINISH: WHITE
PORCELAIN AND
POLISHED NICKEL

SHADE: OPAL
GLASS



C ROOM NAME: BATH 005
PRODUCT NAME: EMORY
MANUFACTURER: SCHOOLHOUSE ELECTRIC

Product Detail

SKU: 254.0021.2	Product Origin: USA
Fitter Size: 2.25	Fixture: 5.5" depth
Canopy Width: 5.25"	Max Wattage: 100
UL Listed: Yes	Shades that Fit: 2.25"

TOTAL: \$125

FINISH: POLISHED
NICKEL

SHADE: OPAL GLASS



#13 ROOM NAME: BEDROOM 004

A PRODUCT NAME: JEFFERSON
MANUFACTURER: REJUVENATION

Item #	A8513
Base Price	0"
Canopy Size	5¼"
Diameter	6½"
Fitter Outside Diameter	6½"
Height	6"
Price as Shown	0"
Width	0"
	no
Finish	Brushed nickel
Socket	Incandescent
Switch	None
Loop To Loop At The Fitter	no

TOTAL: \$155

FINISH: BRUSHED
NICKEL

SHADE: OPAL GLASS



B ROOM NAME: BEDROOM 004
 PRODUCT NAME: WESTMONT
 MANUFACTURER: SCHOOLHOUSE ELECTRIC

Product Detail

SKU: 251.0012.6
 Includes Shades : no
 Shades that Fit: 6
 Canopy Width: 6.5"
 Fitter Size: 6

Product Origin: USA
 Max Wattage: 150
 UL Listed: Yes
 Fixture: L 5" x W 6.5"

FINISH: SATIN NICKEL
 SHADE: OPAL GLASS

SELECT FINISH



TOTAL: \$170

#14 ROOM NAME: FAMILY ROOM 108

A PRODUCT NAME: DOVER BALL
 MANUFACTURER: URBAN ELECTRIC CO.

DOVER BALL		W	H	D	LAMP
HANG REGULAR	MA-9830HR	20	36	15	4-60W-C
GAS	CANOPY	X	Y	Z	ETL
N	6" DIAM	20.5			DAMP

FINISH: ANTIQUE BRASS
 GLASS: OPAL OR CLEAR



TOTAL: \$2,395 base list price

B ROOM NAME: FAMILY ROOM 108
 PRODUCT NAME: URBAN SMOKEBELL (HANG SMALL)
 MANUFACTURER: URBAN ELECTRIC CO.

FINISH: BRONZE METAL
 GLASS: ETCHED GLASS



URBAN SMOKEBELL		W	H	D
HANG REGULAR	MA-9106HR	20.25	31.5	14.5
HANG SMALL	MA-9106HS	13.5	22	10

LAMP	GAS	CANOPY	X	Y	Z	ETL
4-60W-C	N	6" DIAM				DRY
3-60W-C	N	6" DIAM				DRY

TOTAL: \$2,080 base list price

#15 ROOM NAME: KITCHEN
A PRODUCT NAME: TRINITY
 MANUFACTURER: SCHOOLHOUSE ELECTRIC

FINISH: MATTE BRONZE
 SHADE: OPAL GLASS

Product Detail

SKU: 252.0010.23	Product Origin: USA
Shades that Fit: 2.25	Fitter Size: 2.25
Fixture: 32.5" width	Canopy Width: 5.25"
Max Wattage: (3) 100	UL Listed: Yes



TOTAL: \$270

#16 ROOM NAME: POWDER ROOM

A PRODUCT NAME: GRANT COURT
MANUFACTURER: REJUVENATION

Item #	A0501
Base Price	0"
Canopy Size	10"
Diameter	10"
Fitter Outside Diameter	6 ³ / ₈ "
Height	6 ¹ / ₈ "
Price as Shown	0"
	no
Finish	Brushed nickel
Socket	Incandescent
Switch	None
Loop To Loop At The Fitter	no
Select shade	A0501++B4463+

TOTAL: \$270

FINISH: BRUSHED
NICKEL

SHADE: FROSTED
GLASS



B ROOM NAME:
PRODUCT NAME:
MANUFACTURER:

Item #	A9653
Base Price	0"
Canopy Size	4 ⁵ / ₈ "
Depth	4 ⁵ / ₈ "
Fitter Outside Diameter	2 ⁵ / ₈ "
Height	5 ¹ / ₂ "
Price as Shown	0"
Width	4 ⁵ / ₈ "
	no
Finish	Brushed nickel
Socket	Incandescent
Switch	None
Select shade	A9653+AT+B8382+

TOTAL: \$116

FINISH: BRUSHED
NICKEL

SHADE: AMBER GLASS



#17 ROOM NAME: POWDER ROOM

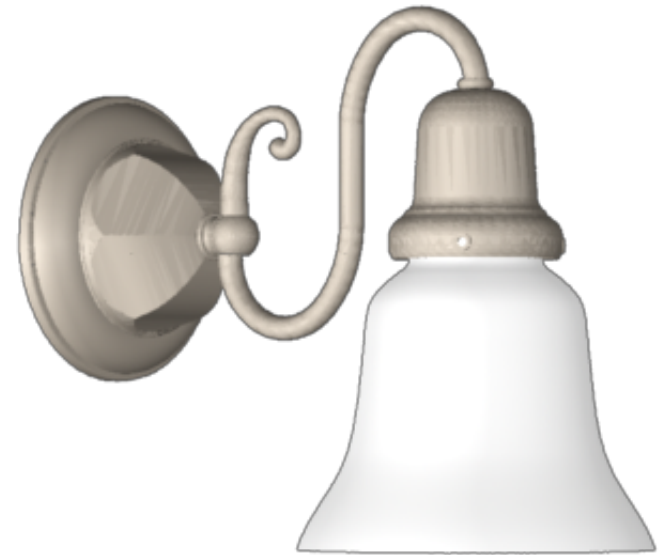
A PRODUCT NAME: GILCHRIST
MANUFACTURER: REJUVENATION

Item #	A0090
Base Price	0"
Canopy Size	4½"
Depth	9"
Depth	7⅝"
Diameter	0"
Fitter Outside Diameter	2⅝"
Height	5⅝"
Price as Shown	0"
Width	4½"

TOTAL: \$190

FINISH: BRUSHED
NICKEL

SHADE: OPAL GLASS



B ROOM NAME: POWDER ROOM

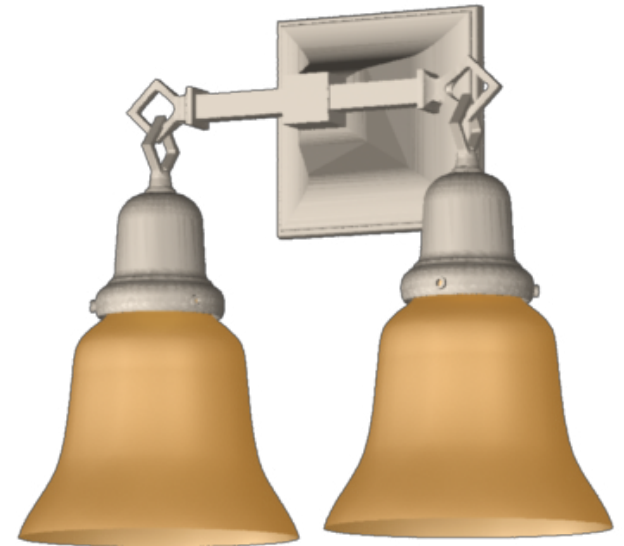
PRODUCT NAME: SILETZ
MANUFACTURER: REJUVENATION

Item #	A6475
Base Price	0"
Finish	x
Height	6¾"
Price as Shown	0"
	no
Finish	Brushed nickel
Socket	Incandescent
Switch	None
Select shade	A6475+AT+B8382+
Maximum fixture wattage per socket	60"
UL Listing	UL Listed Damp
Canopy width	4.65"

TOTAL: \$291

FINISH: BRUSHED
NICKEL

SHADE: AMBER GLASS



#18 ROOM NAME: MASTER BATHROOM

A PRODUCT NAME: IRVINE DOUBLE
MANUFACTURER: SCHOOLHOUSE ELECTRIC

SKU: 254.0045.22
Product Origin: USA
Fitter Size: 2.25
Fixture: 5.75" depth
Canopy Width: 5"
Max Wattage: (2) 100
UL Listed: Yes
Shades that Fit: 2.25"

TOTAL: \$249

FINISH: SATIN NICKEL

SHADE: OPAL GLASS



B ROOM NAME: MASTER BATHROOM

PRODUCT NAME: ALLEN
MANUFACTURER: SCHOOLHOUSE ELECTRIC

SKU: 254.0033.4
Product Origin: USA
Fitter Size: 4
Fixture: 8" depth Canopy
Width: 6"
Max Wattage: 100
UL Listed: Yes
Shades that Fit: 4"

TOTAL: \$265

FINISH: SATIN NICKEL

SHADE: OPAL GLASS



#19 ROOM NAME: DINING ROOM

A PRODUCT NAME: THOMAS
MANUFACTURER: REJUVENATION

Item #	A7696
Base Price	0"
Canopy Size	16½"
Diameter	17"
Finish	x
Fitter Outside Diameter	3"
Price as Shown	0"
	no
Light count	5"
Finish	Burnished antique
Overall length	30"
Socket	Incandescent
Switch	None

TOTAL: \$885

FINISH: BURNISHED
ANTIQUE

SHADE: CRYSTAL
ETCHED

OPTION B:
SELECT VINTAGE
FIXTURE



B ROOM NAME: DINING ROOM

PRODUCT NAME: 19TH C. FRENCH EMPIRE CRYSTAL
CHANDELIER SMALL
MANUFACTURER: RESTORATION HARDWARE

Cast brass and steel wire frame
Antiqued brass finish
Polished glass beads
Uses three 60W max. candelabra bulbs (sold separately)
Hardwire
Adjustable 39½”L chain included
Optional extension chain available (sold separately); adds length
to fixture

DIMENSIONS

39½”L adjustable chain included

17¾” diam., 37”H

Weight: approx. 27.8 lbs.

TOTAL: \$1595 (\$1195 SPECIAL)

OPTION C:
SELECT VINTAGE
FIXTURE



#20 ROOM NAME: ENTRY

A PRODUCT NAME: DIAMOND (HANG SMALL)
MANUFACTURER: URBAN ELECTRIC CO.

DIAMOND		W	H	D
HANG REGULAR	MA-8915HR	15	33	13
HANG SMALL	MA-8915HS	12	25	10

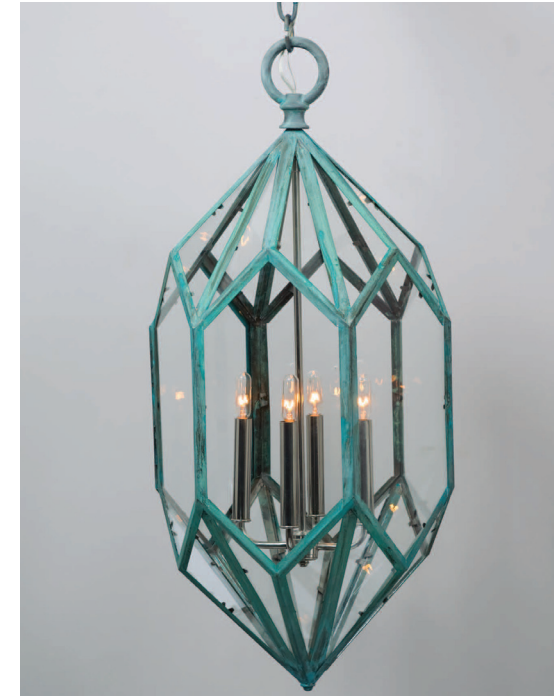
LAMP	GAS	CANOPY	X	Y	Z	ETL
4-60W-C	N	6" DIAM				DAMP
4-60W-C	N	6" DIAM				DAMP

TOTAL: \$3,240 base list price

FINISH: DARKENED
COPPER

GLASS: CLEAR

DARKENED COPPER (DC)



B ROOM NAME: ENTRY

PRODUCT NAME: 19TH C. CASBAH CRYSTAL
CHANDELIER MEDIUM
MANUFACTURER: RESTORATION HARDWARE

Built of cast brass and wrought iron, wrapped with steel wire

Antiqued brass finish

Prismatic glass crystals reflect and refract the light

Uses three 60W candelabra bulbs (sold separately)

Hardwire

Adjustable 39½" chain included

Optional extension chain available (sold separately); adds length
to fixture

DIMENSIONS

39½" adjustable chain included

17¾" diam., 25½"H

Weight: 22.5 lbs.

TOTAL: \$850 (\$675 SPECIAL)



B ROOM NAME: ENTRY

PRODUCT NAME: TUSCANY ALABASTER PENDANT
MANUFACTURER: BRASS LIGHT GALLERY

AL-2012-AD

Candelabra base screw-in sockets (2) each accept 60 W max incandescent, compact fluorescent, or LED.

GU24 base bi-pin socket available. 277V 4 pin socket alternative, inquire.

Center mount to junction box.

Specify overall length. Minimum overall length 9".

Angled ceiling version available, inquire.

UL listed dry location.

Durably constructed of solid brass and real alabaster stone.

Made in USA by Brass Light Gallery.

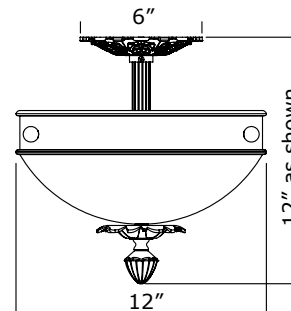
TOTAL: \$635

FINISH: DISTRESSED BRASS

12" ALABASTER BOWL

VERIFY LENGTH.

OPTION C: SELECT VINTAGE FIXTURE



#21 ROOM NAME: ENTRY VESTIBULE

A PRODUCT NAME: CAMBRIDGE
MANUFACTURER: RESTORATION HARDWARE

Made of steel and brass

Wet UL-listed

Hangs vertically, shade pointing down

Small sconce uses one 60W max. candelabra bulb

Large sconce uses two 40W max. candelabra bulbs

Catalog and Web only

DIMENSIONS

Small Sconce: 7¼"W x 6½"D x 14½"H

Large Sconce: 10½"W x 11½"D x 18¾"H

TOTAL: \$279

FINISH: STEEL & BRASS



B ROOM NAME: ENTRY VESTIBULE

FINISH: BLACK

PRODUCT NAME: LONDON LANTERN SCROLLED
DROP WALL LIGHT

GLASS: WATERFALL
GLASS (WF)

MANUFACTURER: BRASS LIGHT GALLERY

Dimensions as shown:
7" roof width
10 1/2" lantern height
14 1/2" overall length
11" projection
5" w x 7 1/4" h mounting plate

Candelabra base cluster accepts:
2/60 watt max. incandescent
or 2/13 watt max. self-ballasted compact
fluorescent
or 2 self-driven candelabra base LED's

Socket Types:
Medium screw in base accepts:
1/150 watt max. incandescent
or 1/42 watt max. self-ballasted
compact fluorescent (CFL)
or self-driven LED

GU24 base accepts:
1/42 watt max. self-ballasted bi-pin fluo-
rescents

UL listed for exterior use

TOTAL: \$785



#22 ROOM NAME: LIBRARY

FINISH: NATURAL
BRASS

A PRODUCT NAME: RHODES
MANUFACTURER: SCHOOLHOUSE ELECTRIC

SHADE: CLEAR
ETCHED GLASS

Product Detail

SKU: 252.0014.6 Product

Origin: USA

Shades that Fit: 6

Fitter Size: 6

Canopy Width: 5.25"

Max Wattage: 150

UL Listed: Yes

TOTAL: \$389



B ROOM NAME: LIBRARY
PRODUCT NAME: IMPERIAL
MANUFACTURER: REJUVENATION

Item # A5316
Canopy Size: 5¼”
Diameter: 6⅝”
Fitter Outside Diameter: 6⅝”
Overall length: 60”
Switch None
Vaulted no
Minimum length 36”
Select shade A5316+OP+B0374+14 in
Maximum fixture wattage per socket 300”
UL Listing UL Listed Damp
Canopy width 5¼”
Overall fixture width 6.57”

TOTAL: OPTION 1: \$455 OPTION 2: \$355

FINISH: BURNISHED
ANTIQUÉ

SHADE: GLASS

VERIFY OVERALL
LENGTH



SHADE OPTION 1

SHADE OPTION 2



#23 ROOM NAME: LIVING ROOM

A PRODUCT NAME: SHERIDAN
MANUFACTURER: REJUVENATION

Item # A1645
Height: 7⅜”
Finish: Burnished antique
Select shade: A1645+CE+B6831+
Maximum fixture wattage per socket: 60
Canopy width: 4.65”
Overall fixture width: 4.65”
Calculated overall length: 12.42”
Overall fixture depth 7”
Canopy Size: 5⅛”
Fitter Outside Diameter: 6⅛”
Finish: Burnished antique

TOTAL: \$190

FINISH: BURNISHED
ANTIQUÉ

SHADE: CRYSTAL
ETCHED



B ROOM NAME:
PRODUCT NAME:
MANUFACTURER:
SKU: 254.0031.2
Product Origin: USA
Fitter Size: 2.25 Fixture: 5.5" depth
Canopy Width: 6"x4.125
Max Wattage: 100
UL Listed: Yes
Shades that Fit: 2.25"

TOTAL: \$116.30 - LIMITED QUANTITY

FINISH: VINTAGE
BRASS

SHADE: GLASS



#24 ROOM NAME: LIVING ROOM

A PRODUCT NAME: HAZELFERN
MANUFACTURER: REJUVENATION

Overall length: 24"
Minimum length: 19"
Select shade: A2750++B2729+
Maximum fixture wattage per socket: 100"
UL Listing: UL Listed Damp
Canopy width: 5.19"
Overall fixture width: 6.13"

TOTAL: \$370

FINISH: BURNISHED
ANTIQUÉ

SHADE: WHITE GLASS

OPTION B: SELECT
VINTAGE FIXTURE



#25 ROOM NAME: LIVING ROOM

A PRODUCT NAME: VICTORIAN HOTEL PENDANT
MANUFACTURER: RESTORATION HARDWARE

Handcrafted of brass
Finished in antique brass
Uses three 60W max candelabra bulbs
3'L chain included
Optional extension chain available (sold separately); adds length to fixture
Catalog and Web only

DIMENSIONS

3'L chain included
Small Pendant: 18" diam., 26"H

TOTAL: \$1,395

FINISH: ANTIQUE BRASS & CLEAR GLASS



OPTION C: SELECT VINTAGE FIXTURE

B ROOM NAME: LIVING ROOM

PRODUCT NAME: RUSCANY ALABASTER PENDANT
MANUFACTURER: BRASS LIGHT GALLERY

AL-2019-AQ

Medium base screw-in sockets (3) each accept 75 W max incandescent, compact fluorescent, or LED.

GU24 base bi-pin socket available. 277V 4 pin socket alternative, inquire.

Center mount to junction box.

Specify overall length. Minimum overall length 12".

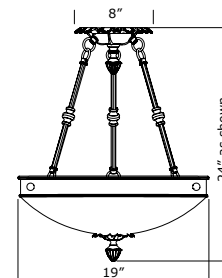
UL listed dry location.

Durably constructed of solid brass and real alabaster stone.

Made in USA by Brass Light Gallery.

TOTAL: \$1085

FINISH: DISTRESSED BRASS



#33 ROOM NAME: ENTRY

A PRODUCT NAME: NEWBERRY
MANUFACTURER: BRASS LIGHT GALLERY

Newberry Exterior Stem Mount Fixture for Globe with 3 1/4" shade holder
Shown in Aged Verdigris Patina finish & Opal Glass Globe

Dimensions as shown: 8" diam. canopy, select choice of globe and overall length

Socket Types:

Medium screw in base accepts: 1/150 watt max. incandescent or 26 watt max. self-ballasted compact fluorescent CFL
Available for GU24 and L.E.D. lamping

Made in U.S.A., UL listed for exterior use

TOTAL: \$425

FINISH: DISTRESSED BRASS



B ROOM NAME: ENTRY

PRODUCT NAME: SUNCREST
MANUFACTURER: REJUVENATION

Item # A4707

Canopy Size: 6 1/2"

Diameter: 6 1/2"

Fitter Outside Diameter: 4 3/8"

Height: 3 3/4"

Finish: Burnished antique

Socket: Incandescent

Select shade: A4707++B2729+

Maximum fixture wattage per socket: 100"

UL Listing: UL Listed Damp

Canopy width: 6.52"

Overall fixture width: 6.52"

Calculated overall length: 12.77"

Dimensions as shown: 4

TOTAL: \$143

FINISH: BURNISHED ANTIQUE



#34 ROOM NAME: MASTER BEDROOM

A PRODUCT NAME: JOHN DAY
MANUFACTURER: REJUVENATION

Item # A4786
Canopy Size: 4¼”
Depth: 5”
Depth: 3⅝”
Fitter Outside Diameter: 2⅝”
Height: 7⅝”
Socket: Incandescent
Select shade: A4786++B3197+
Maximum fixture wattage per socket: 60”
UL Listing: UL Listed Damp
Canopy width: 4.19”
Overall fixture width: 4.19”
Calculated overall length: 11.34”
Overall fixture depth: 4.945”

TOTAL: \$160

FINISH: DISTRESSED
BRASS

SHADE: OPAL GLASS



B ROOM NAME: MASTER BEDROOM

PRODUCT NAME: SUNFLOWER SCONCE
MANUFACTURER: BRASS LIGHT GALLERY

3/4” w x 10” h x 6 1/2” p, 4 3/4”diam. mounting plate
Mounting direction: up light or down light, center mount to stan-
dard junction box

Socket Types: Medium base screw-in accepts: 150 watt max.
incandescent, or 26 watt max. self-ballasted compact fluorescent
(CFL), or self-driven LED. GU24 base accepts: 26 watt bi-pin CFL

Made in U.S.A., UL listed for interior use

TOTAL: \$310

FINISH: DISTRESSED
BRASS



#35 ROOM NAME: HALLWAY 205

A PRODUCT NAME: NORTHWESTERN
MANUFACTURER: SCHOOLHOUSE ELECTRIC

SKU: 251.0010.6

Product Origin: USA I

ncludes Shades : no

Max Wattage: 150

Shades that Fit: 6

UL Listed: Yes

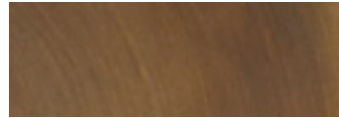
Canopy Width: 6"

Fixture: L 6" x W 6"

Fitter Size: 6

TOTAL: \$245

FINISH: NATURAL
BRASS



B ROOM NAME: HALLWAY 205

PRODUCT NAME: JEFFERSON
MANUFACTURER: REJUVENATION

Item # A8513

Canopy Size: 5¼"

Diameter: 6½"

Fitter Outside Diameter: 6½"

Height: 6"

Finish: Brushed nickel

Socket: Incandescent

Loop To Loop At The Fitter: no

Shade: A8513+OP+B0720+

Maximum fixture wattage per socket: 300"

UL Listing: UL Listed Damp

Canopy width: 5.27"

Overall fixture width: 6.51"

Calculated overall length: 12.97"

TOTAL: \$145

FINISH: BRUSHED
NICKEL



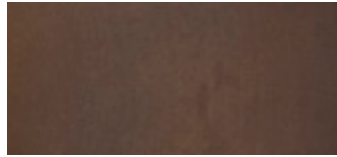
#36 ROOM NAME: HALLWAY 002

A PRODUCT NAME: MARIAN
MANUFACTURER: SCHOOLHOUSE ELECTRIC

SKU: 251.0011.4
Product Origin: USA
Includes Shades : no
Max Wattage: 100 S
shades that Fit: 4 UL Listed: Yes
Canopy Width: 7"
Fixture: L 4" x W 7"
Fitter Size: 4

TOTAL: \$175

FINISH: VINTAGE
BRASS

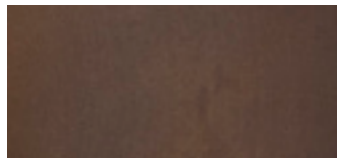


B ROOM NAME: HALLWAY002
PRODUCT NAME: OTIS
MANUFACTURER: SCHOOLHOUSE ELECTRIC

SKU: 251.0014.3
Product Origin: USA
Includes Shades : no
Max Wattage: 75
Shades that Fit: 3.25
UL Listed: Yes
Canopy Width: 6.25"
Fixture: L 2" x W 6.25"
Fitter Size: 3.25

TOTAL: \$118

FINISH: VINTAGE
BRASS



#37 ROOM NAME: FAMILY ROOM 009

A PRODUCT NAME: SATELLITE
MANUFACTURER: SCHOOLHOUSE ELECTRIC

SKU: 251.0056.4

Product Origin: USA

Includes Shades : no

Max Wattage: 100

Shades that Fit: 4"

UL Listed: Yes

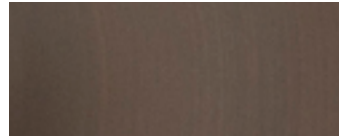
Canopy Width: 5"

Fixture: L 4", W 5"

Fitter Size: 4

TOTAL: \$141

FINISH: MATTE
BRONZE



B ROOM NAME: FAMILY ROOM 009

PRODUCT NAME: SAME AS (7)

MANUFACTURER: SAME AS (7)

TOTAL: \$ SAME AS (7)

#38 ROOM NAME: MECH RM & LAUNDRY

A PRODUCT NAME: MERITIME CAGED
MANUFACTURER: RESTORATION HARDWARE

Sized for indoor use, its die-cast aluminum frame shelters a blown-glass shade with a flattering, frosted finish

Plated in polished nickel

Hardwire

Uses one 60W max. bulb

Catalog and Web only

DIMENSIONS

4¾" W x 4¾" D x 9½" H

TOTAL: \$199

FINISH: POLISHED
NICKEL



B ROOM NAME: MECH RM & LAUDNRY
PRODUCT NAME: NORTHWESTERN 4"
MANUFACTURER: SCHOOLHOUSE ELECTRIC

SKU: 251.0010.4

Product Origin: USA

Includes Shades : no

Max Wattage: 100

Shades that Fit: 4

UL Listed: Yes

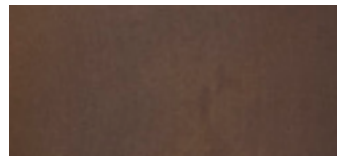
Canopy Width: 6"

Fixture: L 5" x W 6"

Fitter Size: 4

TOTAL: \$135

FINISH: VINTAGE
BRASS



#39 ROOM NAME: BATH 005

A PRODUCT NAME: THUNDERBIRD
MANUFACTURER: SCHOOLHOUSE ELECTRIC

SKU: 251.0027.4
Product Origin: USA
Includes Shades : no
Max Wattage: 100
Shades that Fit: 4
UL Listed: Yes
Canopy Width: 8"
Fixture: L 3" x W 8"
Fitter Size: 4

TOTAL: \$165

FINISH: WHITE
PORCELAIN



B ROOM NAME: BATH 005
PRODUCT NAME: MARIAN
MANUFACTURER: SCHOOLHOUSE ELECTRIC

SKU: 251.0011.4
Product Origin: USA
Includes Shades : no
Max Wattage: 100
Shades that Fit: 4
UL Listed: Yes
Canopy Width: 7"
Fixture: L 4" x W 7"
Fitter Size: 4

TOTAL: \$175

FINISH: POLISHED
NICKEL



#40 ROOM NAME: STORAGE

A PRODUCT NAME: THURMAN
MANUFACTURER: REJUVENATION

Item # A5162

Canopy Size: 8⁵/₈"

Diameter: 8⁵/₈"

Fitter Outside Diameter: 6³/₈"

Height: 1⁷/₈"

Socket: Incandescent

Switch: None

Select shade: A5162+OP+B7802+12 in

Maximum fixture wattage per socket: 100"

UL Listing: UL Listed Damp

Canopy width: 8.67"

Overall fixture width: 8.67"

Calculated overall length: 8.93"

TOTAL: \$153

FINISH: BRUSHED
NICKEL



#41 ROOM NAME: KITCHEN

A PRODUCT NAME: MONTCLAIR
MANUFACTURER: SCHOOLHOUSE ELECTRIC

SKU: 254.0020.2

Product Origin: USA

Fitter Size: 2.25

Fixture: 7" depth

Canopy Width: 5.25"

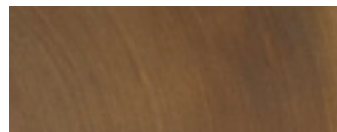
Max Wattage: 100

UL Listed: Yes

Shades that Fit: 2.25"

TOTAL: \$125

FINISH: NATURAL
BRASS

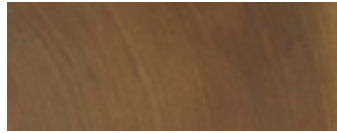


B ROOM NAME: KITCHEN
PRODUCT NAME: EMORY
MANUFACTURER: SCHOOLHOUSE ELECTRIC

SKU: 254.0021.2
Product Origin: USA
Fitter Size: 2.25
Fixture: 5.5" depth
Canopy Width: 5.25"
Max Wattage: 100
UL Listed: Yes
Shades that Fit: 2.25"

TOTAL: \$125

FINISH: NATURAL
BRASS



#42 ROOM NAME: BACK EXTERIOR

A PRODUCT NAME: CLARK
MANUFACTURER: SCHOOLHOUSE ELECTRIC

SKU: 254.0034.4
Product Origin: USA
Fitter Size: 4
Fixture: 8" depth
Canopy Width: 5.5"
Max Wattage: 100
Includes Shades : no
UL Listed: Yes
Shades that Fit: 4"

TOTAL: \$195

FINISH: BLACK CAST
IRON



B ROOM NAME: BACK EXTERIOR

PRODUCT NAME: PROVINCIAL LANTERN
MANUFACTURER: BRASS LIGHT GALLERY

Dimensions as shown:

6" roof width

10" lantern height

12 3/4" overall length

9 3/4" projection

4 3/4" w x 7" h mounting plate

Socket Types:

Medium screw in base accepts:

1/150 watt max. incandescent

or 1/42 watt max. self-ballasted compact fluorescent (CFL)

or self-driven LED

GU24 base accepts:

1/42 watt max. self-ballasted bi-pin fluorescents

UL listed for exterior use

TOTAL: \$465

FINISH: BLACK CAST
IRON



#43 ROOM NAME: MASTER BEDROOM

A PRODUCT NAME: RUSCANY ALABASTER PENDANT
MANUFACTURER: BRASS LIGHT GALLERY

AL-2024-AQ

Medium base screw-in sockets (4) each accept 100 W max incandescent, compact fluorescent, or LED.

GU24 base bi-pin socket available. 277V 4 pin socket alternative, inquire.

Center mount to junction box.

Specify overall length. Minimum overall length 12".

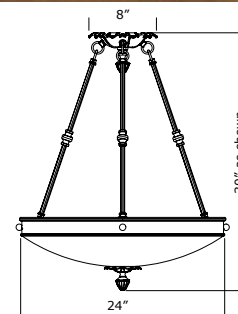
UL listed dry location.

Durably constructed of solid brass and real alabaster stone.

Made in USA by Brass Light Gallery.

TOTAL: \$1575

FINISH: DISTRESSED
BRASS
OPTION B: SELECT
VINTAGE FIXTURE



#44 ROOM NAME: MASTER BEDROOM

A PRODUCT NAME: PEARL
MANUFACTURER: REJUVENATION

Item # A6981

Canopy Size: 5 1/8"

Diameter: 5 1/8"

Fitter Outside Diameter: 3 5/8"

Overall length: 28"

Canopy: Beehive

Vaulted: no

Minimum length: 18"

Select shade: A6981++B2609+

Maximum fixture wattage per socket: 60"

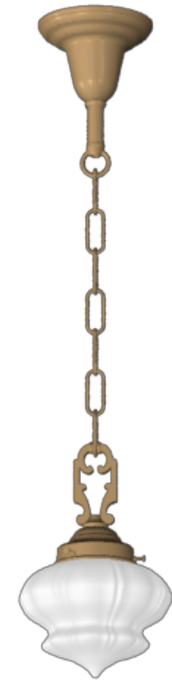
UL Listing: UL Listed Damp

Canopy width: 5.185"

Overall fixture width: 3.59"

TOTAL: \$225

FINISH: OLD BRASS



B ROOM NAME: MASTER BEDROOM

PRODUCT NAME: SUNCREST
MANUFACTURER: REJUVENATION

Item # A4707

Canopy Size: 6 1/2"

Diameter: 6 1/2"

Fitter Outside Diameter: 4 3/8"

Height: 3 3/4"

Socket: Incandescent

Select shade: A4707++B2729+

Maximum fixture wattage per socket: 100"

UL Listing: UL Listed Damp

Canopy width: 6.52"

Overall fixture width: 6.52"

Calculated overall length: 12.77"

TOTAL: \$143

FINISH: OLD BRASS



#45 ROOM NAME: STAIRWAY

A PRODUCT NAME: HAZELFERN
MANUFACTURER: REJUVENATION

Overall length: 24"
Minimum length: 19"
Select shade: A2750++B2729+
Maximum fixture wattage per socket: 100"
UL Listing: UL Listed Damp
Canopy width: 5.19"
Overall fixture width: 6.13"

TOTAL: \$370

B ROOM NAME: ROTUNDA
PRODUCT NAME: IMPERIAL
MANUFACTURER: REJUVENATION

Item # A5316
Canopy Size: 5¼"
Diameter: 6⅝"
Fitter Outside Diameter: 6⅝"
Overall length: 60"
Vaulted no
Minimum length: 36"
Select shade: A5316+OP+B0374+14 in
Maximum fixture wattage per socket: 300"
UL Listing: UL Listed Damp
Canopy width: 5¼"
Overall fixture width: 6.57"

TOTAL: OPTION 1: \$455 OPTION 2: \$355

FINISH: BURNISHED
ANTIQUÉ

SHADE: WHITE GLASS

OPTION B: SELECT
VINTAGE FIXTURE



FINISH: BURNISHED
ANTIQUÉ

SHADE: GLASS

VERIFY OVERALL
LENGTH



SHADE OPTION 1

SHADE OPTION 2



C ROOM NAME: ROTUNDA

PRODUCT NAME: 19TH C. CASBAH CRYSTAL
CHANDELIER MEDIUM

MANUFACTURER: RESTORATION HARDWARE

Built of cast brass and wrought iron, wrapped with steel wire

Antiqued brass finish

Prismatic glass crystals reflect and refract the light

Uses three 60W candelabra bulbs (sold separately)

Hardwire

Adjustable 39½” chain included

Optional extension chain available (sold separately); adds length
to fixture

DIMENSIONS

39½” adjustable chain included

17¼” diam., 25½”H

Weight: 22.5 lbs.

TOTAL: \$850 (\$675 SPECIAL)

